

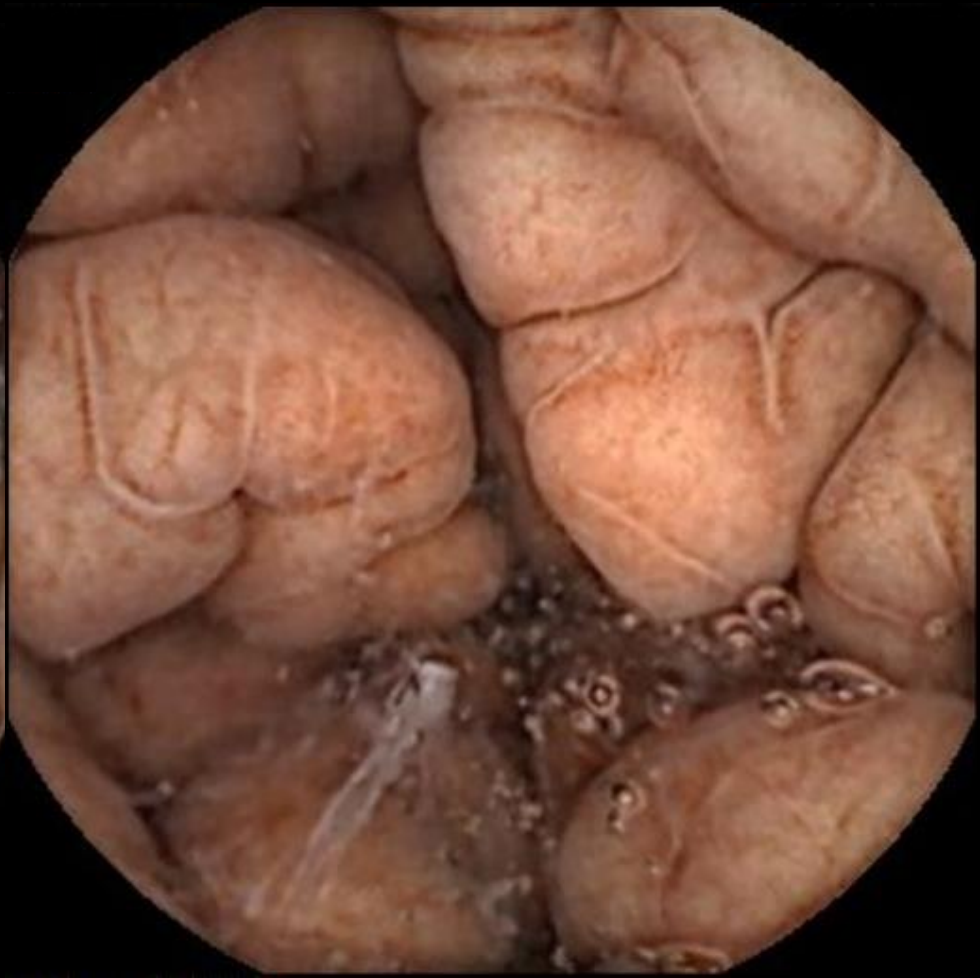
*GI Bleeding in 78yr ♂*  
*January 2017*  
*Antiplatelet Drugs*  
*Endoscopy NAD*



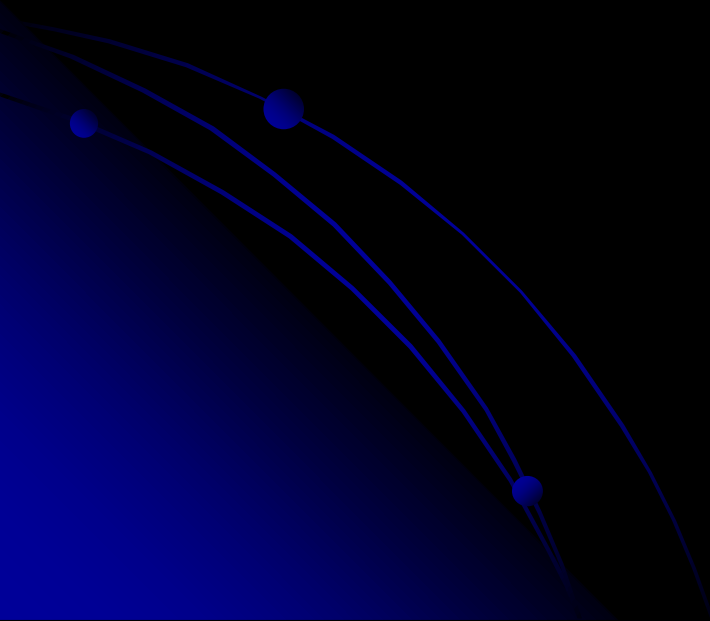
*GI Bleeding in 78yr ♂*



*GI Bleeding in 78yr ♂*



?



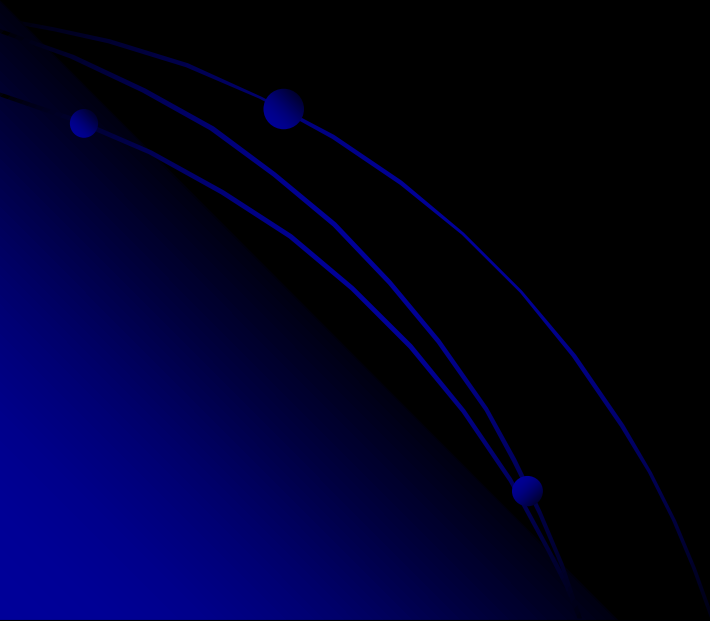
***70 yr ♀ Inx for IDA***

***2 yr History low grade anaemia***

***Ischaemic Heart Disease***

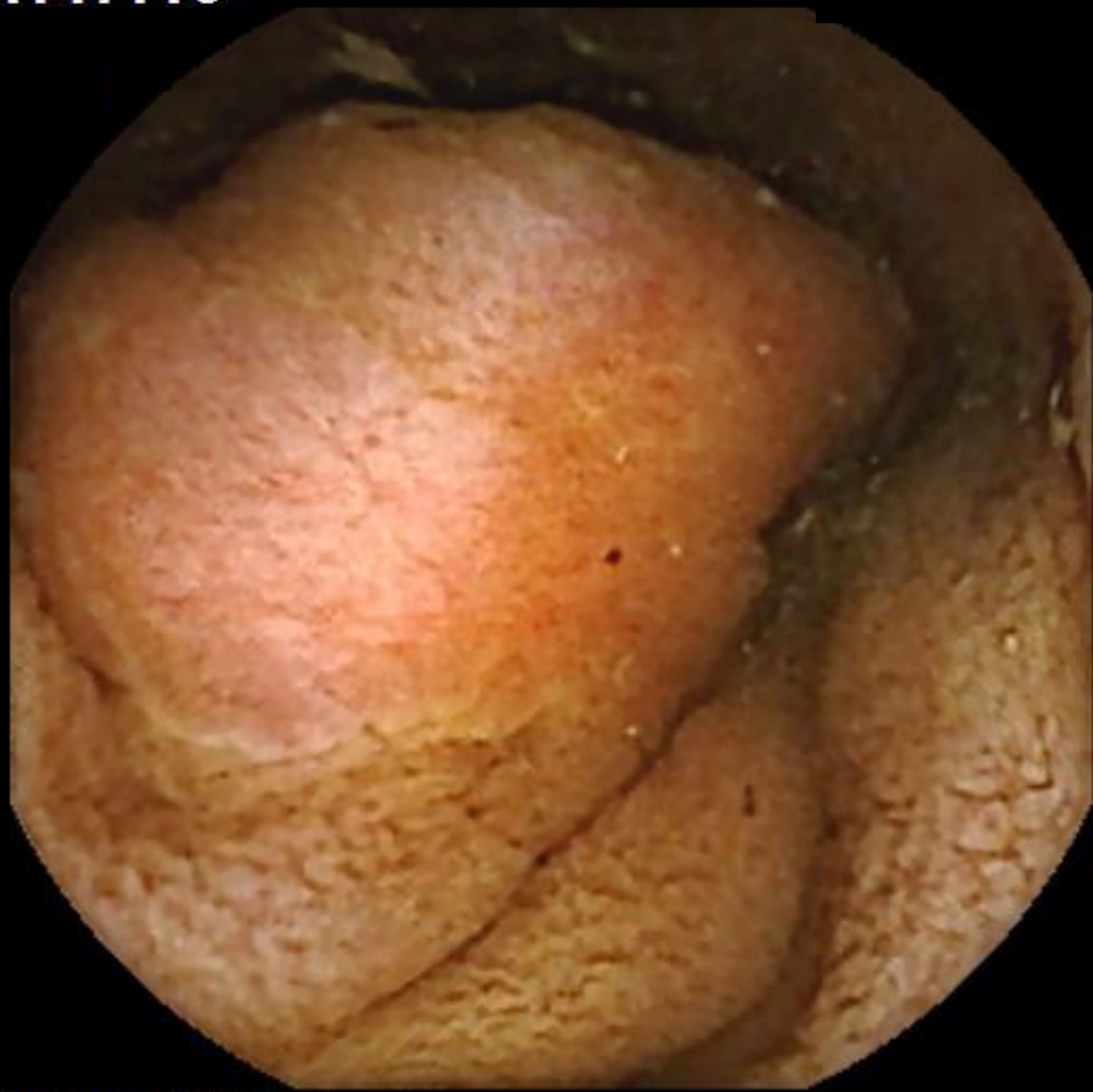
***Planned Stenting + Anti platelet Rx***

***Gastroscopy / Colonoscopy -ve***





01:47:19

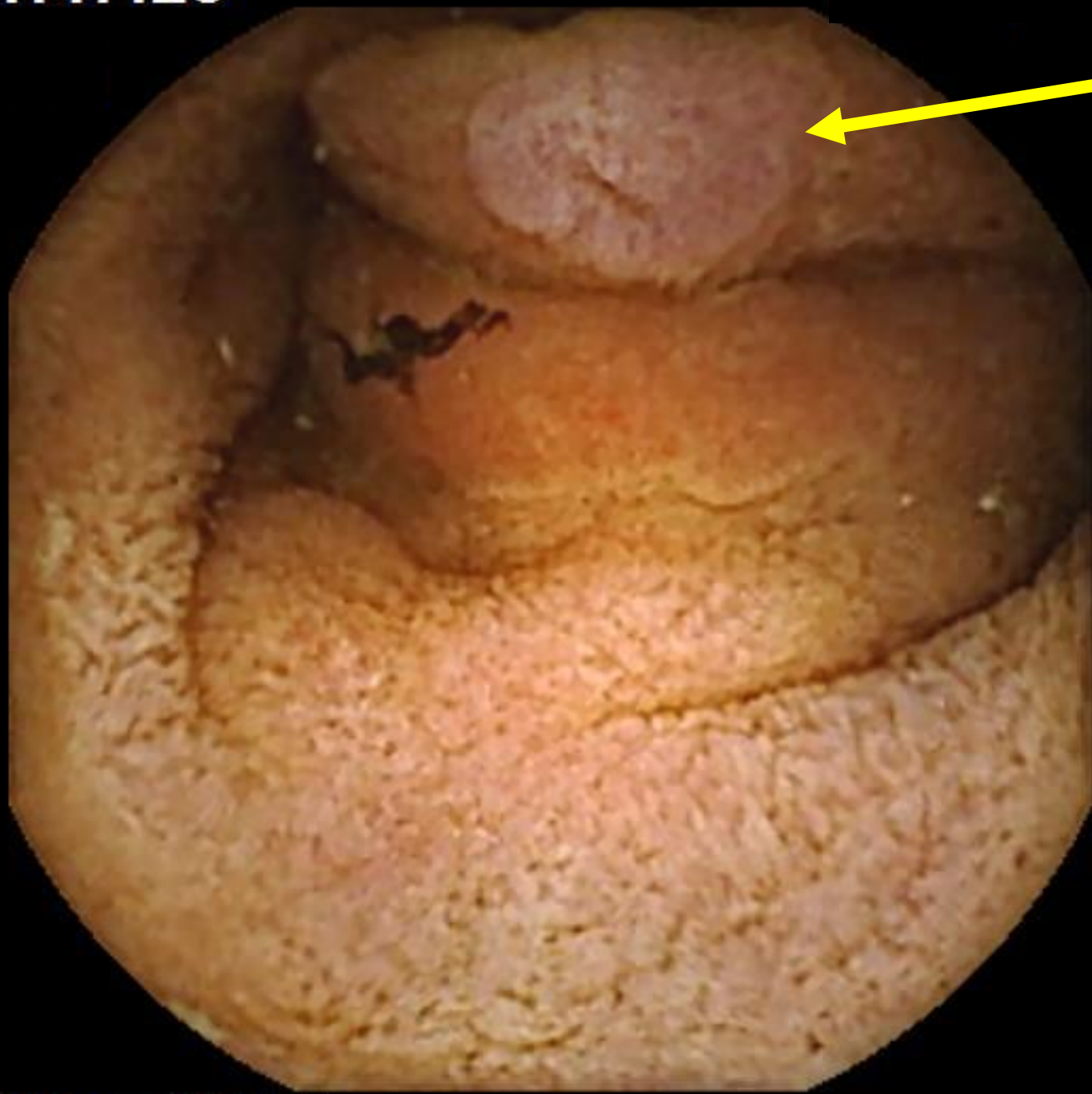


01:47:19



*70yr ♀ IDA Inx for Coronary stent*

01:47:28





***70 yr ♀ Inx for IDA***

***2 yr History low grade anaemia***

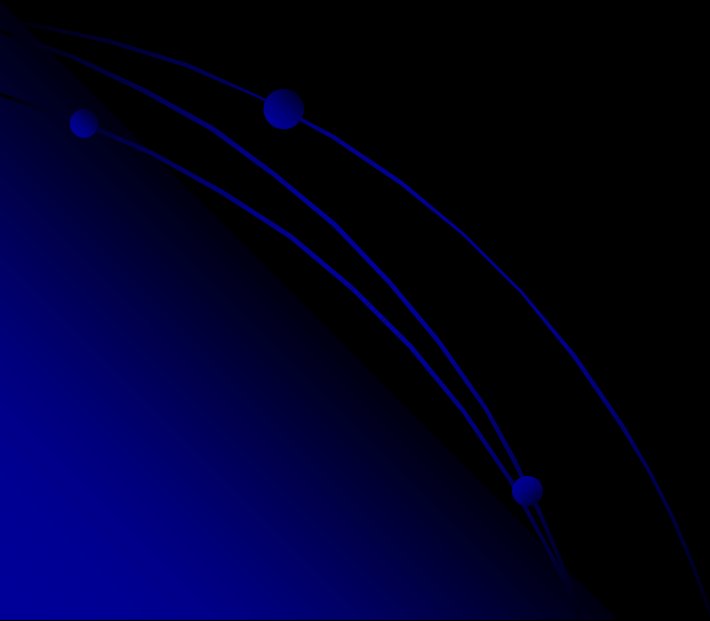
***Ischaemic Heart Disease***

***Planned Stenting + Anti platelet Rx***

***Gastroscopy / Colonoscopy –ve***

***PMH Removal of Melanoma 5 yrs ago***

?



# *Intussusception in Adults*

*Uncommon < 5% of all cases*

*Children 2<sup>nd</sup> commonest operation after appendicitis*

*In Adults (Kouladrous et al 2015)*

*1-5% Cases of intestinal obstruction*

*Small bowel 35 - 60%*

*71% Benign - 27% Lipomata*

*29% Neoplastic*

# *Intussusception in Adults*

*Uncommon < 5% of all cases*

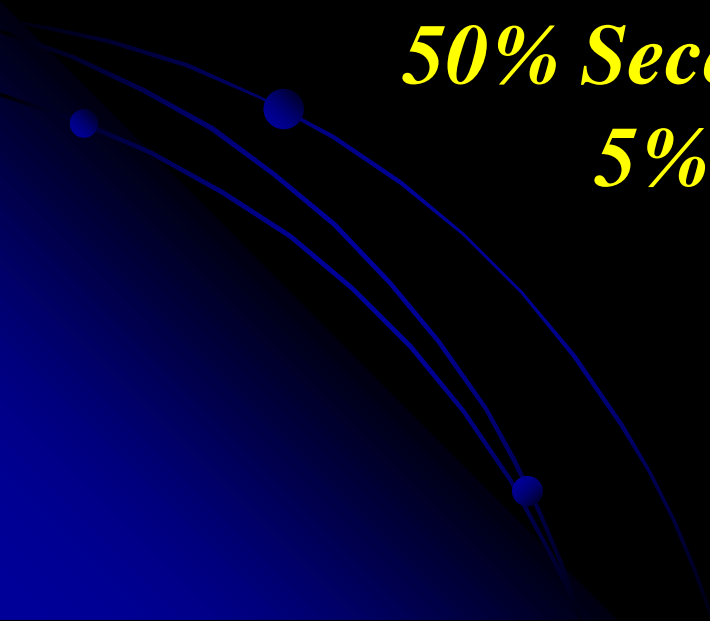
*75% Small bowel tumours malignant*

*(20% Intussuscept)*

*50% Primary*

*50% Secondary*

*5% Melanoma*





# *Intussusception in Adults*

## *Uncommon < 5% of all cases*

*Kansas City study*      *N=8 ( 26yrs – 74yrs)*

*Idiopathic*                      *2*

*Lipoma*                              *1*

*Neoplastic*                      *5*

*Carcinoid*                      *1*

*GIST*                                  *1*

• *TVAdenoma*                      *1*

*Adenocarcinoma*              *1*

*2ary Lung*                      *1*

# *Intussusception in Adults*

## *Uncommon < 5% of all cases*

*Indian study* *N=12*

*Idiopathic* *1*

*Lipoma* *2*

*Inflammatory polyp* *1*

*Tb Stricture* *1*

*Neoplastic* *7*

*Carcinoid* *2*

*GIST* *1*

*PJ polyp* *1*

*Adenocarcinoma* *2*

*B cell Lymphoma* *1*



# Capsule Figures 2018 (Oct) N= 40

## Mean Time

### From Initial Inx

**11.8 months**

**(Range 1 – 120 months)**

### From last Endoscopy

**5.1 months**

**( Range 1 – 23 months)**

### Revision excluding the 2 Extreme cases

**7.3 months**

**(Range 1 – 18 months)**

**2.2 months**

**(Range 1 – 18 months)**